

# QUICK USER GUIDE

NITRO-DISPENSER FOR COCKTAILS – MODEL: ND-20-XX-02 CO

## SET UP

### 1. SCOPE OF SUPPLY

- 1 x Nitro Dispenser
- 1 x Plastic CPC valved canister of 5l (170 oz)

#### Accessories Box parts

- 1 x Drip Tray
- 1 x Tap and handle
- 1 x Combi Tap & Filler key
- 1 x Intake hose with CPC couplers
- 1 x Jar of ONE-PRO cleaner 566 g (20 oz)
- 1 x Power cord



### 2. PLACE THE DISPENSER

- Place unit on a level and dry surface
- Leave a gap of at least 3 cm on either side, to allow air ventilation
- Place drip tray in front of the dispenser



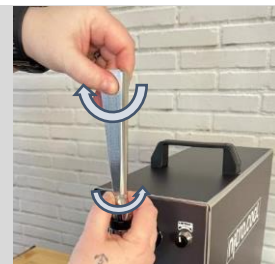
### 3. TAP SETUP – STEP ONE

- Attach the tap and tighten the connection with the key (counter clockwise)
- Insert the tap valve into the shank and turn nut clockwise to tighten



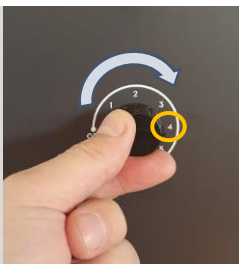
### 4. TAP SETUP – STEP TWO

- Attach the handle
- Fix handle position with the counter screw nut



### 5. ADJUST TEMP TO MODERATE

- Turn the thermostat dial to 4. This is a moderate target temperature of 5°C / 41°F
- During flushing and cleaning, the dispenser can freeze if the temperature is set colder** as the liquid doesn't contain alcohol.
- AVOID LIQUID FREEZING.**



### 6. PREPARE CANISTER WITH WATER

- Put 2.5 l (85 oz) of water into the canister
- Shake it a few times
- Connect the CPC coupler to the canister and the inlet at the dispenser



### 7. FLUSH THE DISPENSER

- Connect the power plug at the backside.
- Switch the toggle switch of the air compressor ON
- Start flushing dispenser with water by pulling tap handle down towards you



### 8. PREPARE COFFEE COCKTAILS

- Prepare your Coffee Cocktails according to your recipe.
- It is important that the coffee (or the coffee concentrate) used has been filtered with 100µm or finer!**
- Connect the CPC coupler



### 9. FILL DISPENSER WITH PRODUCT

- Pull tap handle down until product is pouring out of the tap



### 10. NITRO TOGGLE SWITCH

- Turn the nitro switch on: "NITRO ON"
- Pull tap handle down until product is pouring out of the tap



### 11. ADJUST TEMP TO COLD

- Turn the thermostat dial to 7. This is a coldest target temperature of the dispenser.
- Make sure your Coffee Cocktail drink is in the dispenser. Nonalcoholic beverages will freeze at this temperature.



### 12. READY TO SERVE

- The Nitro-Dispenser is now ready to serve excellent Coffee cocktails.

**CHEERS!**

